



**SALFORD  
ARCHAEOLOGY**

## **Gazetteer of Features of Heritage Significance**

5<sup>th</sup> & 6<sup>th</sup> Floors,  
Islington Mill, Salford

**Client:**

Islington Mill

**Technical Report:**

Chris Wild



# *Islington Mill Gazetteer of Features of Heritage Significance*

---

## *Introduction*

The survey of the 5<sup>th</sup> floor and the attic space within Islington Mill initially comprised a walk-through of the building prior to the commencement of the project, in order to identify features of archaeological significance that required special care or mitigation during the current scheme of repair works. Once the soft strip was underway, additional visits were undertaken to identify further features of significance that were revealed.

Bays are numbered from the western end of the building, and the nomenclature of '5<sup>th</sup> Floor' and 'Attic' have been retained from their common usage to describe the upper two levels within the structure.

## *5th floor Overview*

The 5<sup>th</sup> floor comprises an unconverted open space. Unlike the floors below, which are of fireproof construction with three rows of columns, this upper floor has only the central column row, with timber pads onto large scantling ceiling beams that form the tie beams of the trusses above.

## *Attic Overview*

The attic has similarly had little disturbance for many years, being used largely as storage and exhibition space. As such, it is little altered since the cessation of textile manufacture, and retains many early features. The roof comprises queen post trusses, allowing the wide central space to be used, whilst the low eaves were originally partitioned by lath and plaster walls. Light was originally provided by round-headed windows in either gable, with skylights having been added to both pitches at a later date.



## *Gazetteer of Heritage Features: 5<sup>th</sup> Floor*

---

Feature Number: **5/01**

Floor / Bay: 5/All

Feature Type: External walls

**Description:** The external walls of the 1823 mill are internally faced with handmade bricks, built in three-stretcher English Garden Wall bond. The brickwork is largely obscured by thick layers of paint and later fittings, but where it is exposed, it is bonded in a pale lime-based mortar.



**Assessment of Significance:** The walls form an integral element of the structure and are of HIGH significance. Interventions should ideally be kept to a minimum to preserve this important original fabric.

---

Feature Number: **5/02**

Floor / Bay: 5/All

Feature Type: Column

**Description:** Each bay has a cylindrical cast-iron column at its division, placed centrally between the north and south walls. The columns are of 6" diameter with a rectangular bolting plate that houses two bolts through a timber pad into the tie beam above. The pads are of differing thickness and somewhat unusually, the bolts were driven from above, with the nuts visible below the bolting head. Each column, apart from that at the eastern end of the 5<sup>th</sup> floor, has two castings for horizontal line shaft carrier brackets on the northern face, both with ogee profile  $\frac{1}{2}$ " wide ribs to a  $4\frac{1}{2}$ " wide mounting plate with two rectangular bolt holes for a pillow bracket. The eastern column has a vertical bolting plate, placed perpendicular to the horizontal castings, and formed the mounting for an end bearing for the line shaft. Such a feature is uncommon, with end bearings more commonly being built into walls.



**Assessment of Significance:** The columns form an integral element of the structure and are of HIGH significance. Horizontal line-shaft carrier brackets are relatively rare, reflecting the early date of the columns, and the use of two such brackets is very uncommon. The significance of the columns is further enhanced by the accounts of the construction of the mill, where a collapse in 1824 was blamed on the failure of a cast-iron column.

Interventions should be avoided to preserve this important original fabric, and protection installed as appropriate during the work.

---

Feature Number: **5/03**

Floor / Bay: 5/All

Feature Type: Ceiling beams

**Description:** Each bay division is spanned by a timber ceiling beam, supported at its mid-point by the cast-iron columns (5/02). These are of large scantling rectangular section, almost certainly of Baltic softwood, and typically of 7½" section. They are socketed into the long walls at either end, with no discernible pad, and appear to be butted by the timber window lintels. Each tie beam has stirrup straps to the queen posts above (Plate). Many of the beams were latterly shuttered, and several have been repaired or reinforced. Such interventions will be detailed for each individual beam.



**Assessment of Significance:** The timber ceiling beams represent the tie beams of the original roof trusses, and are thus an integral element of the structure and are of HIGH significance. The lower floors are of fireproof brick arch construction, meaning that Level 5 represents the only floor of the mill with flat ceilings and timber ceiling beams, typical of early textile mills.

Several of the timbers are in poor condition, and their repair has been included within the current project. These will be undertaken sympathetically, retaining as much original fabric as possible, whilst attempting not to obscure any significant detail. Cleaning of the timbers will be undertaken carefully to avoid damage to features identified on the beams.

---

Feature Number: **5/04**

Floor / Bay: 5/All

Feature Type: Metal plate

**Description:** Each tie beam has a steel/ plate bolted into the soffit, immediately adjacent to the column, on its eastern side. These are 17" long, and secured by four hexagonally-headed bolts, and cover pairs of small square cut-outs in the soffit of each beam, typically 2" wide, 1" deep, and set 9" apart. These appear to relate to line shaft hanger brackets, and are aligned with a 2ft wide bearing





box in the west wall, which represented the end bearing for an inserted line shaft, replacing the original shaft that ran adjacent to the columns, and was inserted after 1828.

**Assessment of Significance:** The brackets provide good evidence for the power system within the mill, albeit within a secondary phase. Although the hangers themselves have been removed, the extant brackets and associated cut-outs in the tie beams are of HIGH significance.

---

Feature Number: **5/05**

Floor / Bay: 5/All

Feature Type: Tile flooring

**Description:** The flooring of Level 5 comprises square quarry tiles of approximately 5" size and varying from an orangey red to almost black in colour. These overlay a make-up layer above the curved brick arches of the floor below and appear to underlie the column feet, suggest that they formed the original flooring of the mill. Their use within blocking of the original upright shaft bearing box suggest the re-use of salvaged tiles, rather than a complete reflooring of the whole floor at the time of the replacement of the original line shaft.



**Assessment of Significance:** The flooring is likely to represent the original flooring of the mill, and is therefore considered to be of HIGH significance.

---

Feature Number: **5/06**

Floor / Bay: 5/All

Feature Type: Window openings

**Description:** Each of the 12 bays of the mill has 4'6" wide windows in both the north and south walls, set within apertures of 5'6" width on the internal wall face, with splayed internal reveals, below flat timber lintels. The sloping sills have ceramic tile coverings, similar to those used in the floor, with some retaining flat timber sills above, almost certainly of later date. Several of the windows have been boarded over, and none retain the original frames, which would have contained many small panes, probably set within a timber frame.



A window of similar style and proportions, set within the southern part of the west wall is almost certainly a contemporary original aperture.

**Assessment of Significance:** The window openings are largely intact and original, and therefore considered to be of HIGH significance, although all frames have been replaced and are of LOW significance.

---

Feature Number: **5/07**

Floor / Bay: 5/All

Feature Type: Sprinkler system

**Description:** Extensive remains of what was probably an early-twentieth century sprinkler system survives at ceiling level throughout the majority of Level 5. It rises against the south wall in Bay 6, and has diminishing pipes with relatively ornate, but typical, hangers attached to the timber ceiling beams. The system rises up into the attic within Bay 2, and several of the heat sensitive bulbs survive *in situ*.



**Assessment of Significance:** The sprinkler system represents a well-preserved example of early-twentieth century fire-fighting apparatus found within many mills. Although an important feature of the mill from its installation, which would have been contemporary with the external fire escape, it is unremarkable in its design, and it is therefore considered to be of MEDIUM significance. Its retention would hamper the programme of repair works being undertaken, and it has therefore been recorded as part of a laser scan of the entire floor level prior to its removal.

---

Feature Number: **5/08**

Floor / Bay: 5/All

Feature Type: Heating pipes

**Description:** A series of narrow heating pipes were placed at a height of approximately 2m above floor level around the perimeter of Level 5. These are almost



certainly of early-twentieth century origin, installed to create a suitable temperature and humidity for cotton spinning, in order to reduce breakages of the thread.

**Assessment of Significance:** As with the sprinkler system, heating pipes array were a common feature of cotton spinning mills in the region from the early twentieth century. However, their survival is less frequent than that of sprinkler systems, largely due to their lower placement within rooms making them inconvenient during reuse of buildings post cotton spinning. Given the relatively late date of the feature, the pipes are considered to be of MEDIUM significance, and like the sprinkler system, has been laser scanned prior to its removal during the repair works.

---

Feature Number: **5/09**

Floor / Bay: 5/1

Feature Type: Ceiling beam

**Description:** An east/west aligned narrow ceiling beam, placed at the mid-point of the eaves above in the southern part of the bay. Socketed into the brickwork of the west wall, and hung onto the tie beam to the east with a cast-iron shoe. Possibly relates to the insertion of a hoist into the attic (**5/14**), and may form a pair with Feature **5/10**, placed in a similar position in the northern part of the bay.



**Assessment of Significance:** The precise function of the beam is unknown, but it appears to be of relatively early, or possibly original date, and is therefore considered to be of MEDIUM significance.

---

Feature Number: **5/10**

Floor / Bay: 5/1

Feature Type: Ceiling beam

**Description:** An east/west aligned narrow ceiling beam, placed at the mid-point of the eaves above in the northern part of the bay. Socketed into the brickwork of the west wall and hung onto the tie beam to the east with a cast-iron shoe. Possibly forms a pair with Feature **5/09**, placed in a similar position in the southern part of the bay.



**Assessment of Significance:** The precise function of the beam is unknown, but it appears to be of relatively early, or possibly original date, and is therefore considered to be of MEDIUM significance.

---

Feature Number: **5/11**

Floor / Bay: 5/1

Feature Type: Ceiling beam

**Description:** A north/south aligned narrow ceiling beam, placed within the northern part of the bay, adjacent to the gable wall. The beam is chamfered on its eastern face, suggesting that it was intended as a long-term fixture, bolted from the floor above at either end. Possibly relates the hanging of a short line shaft or pulley associated with the hoist inserted into the southern part of the bay (**5/14**).





**Assessment of Significance:** The precise function of the beam is unknown, but it appears to be of relatively early, or possibly original date, and is therefore considered to be of MEDIUM significance.

---

Feature Number: **5/12**

Floor / Bay: 5/1

Feature Type: Bearing box

**Description:** A cast-iron bearing box set within the western gable wall. It formed the end bearing for a line shaft, and is of a style typical of the mid/late 19<sup>th</sup> century, representing the only extant evidence for significant modifications to the principal line shafting system within the mill undertaken following the repositioning of the engine house after 1828, but probably significantly later.



**Assessment of Significance:** The bearing box provides good visual evidence for modifications to the power system within the mill, and is therefore considered to be of HIGH significance.

---

Feature Number: **5/13**

Floor / Bay: 5/1

Feature Type: Fire escape

**Description:** A remodelling of the southern window in the west bay to form a fire escape. This comprised the removal of the lower part of the wall to create a doorway, with the eastern part then being rebuilt in machine-made brick, below a window flanking the doorway, and a large fanlight above.

**Assessment of Significance:** The feature provides good visual evidence for the installation of fire protection during the early 20<sup>th</sup>-century. Given that the original sprinkler system (**5/07**) has been removed, this feature will represent the only internal evidence for this important upgrade of fire protection, and is therefore considered to be of MEDIUM significance.

---





Feature Number: **5/14**

Floor / Bay: 5/1

Feature Type: Hoist

**Description:** A hoist between the 5<sup>th</sup> and 6<sup>th</sup> floors, placed in the southern part of the western bay. It has substantial chamfered timbers forming its eastern and western sides, with a framework of tongue-and-grooved planking projecting through the ceiling on a frame of square posts. The aperture between floors also has an *in-situ* tongue-and-grooved plank cover.



**Assessment of Significance:** The feature represents an insertion, probably in the late-19<sup>th</sup> or early 20<sup>th</sup>-century, although the housing may be for an earlier opening between the two floors. The hoist mechanism above (**6/\*\***) survives intact, increasing the importance of the aperture between the two floors, and it is therefore considered to be of MEDIUM significance.

---

Feature Number: **5/15**

Floor / Bay: 5/1

Feature Type: Ceiling beam pad

**Description:** The plate adjacent to the column of the western tie beam is not metal, as elsewhere, but comprises a thick timber pad, bolted into the soffit of the beam by four square-headed bolts. It has a wide compression mark in its soffit, suggesting that it may have formed the pad between a post and the tie beam prior to the relocation of the main line shaft to the north of the column line, in line with bearing box **5/12**.



**Assessment of Significance:** The precise function of the pad is unknown, but it appears to be of relatively early, or possibly original date, and is therefore considered to be of MEDIUM significance.

---

Feature Number: **5/16**

Floor / Bay: 5/1

Feature Type: Cut-out / compression scar

**Description:** A round-headed, ogee profile cutaway in the soffit of the western tie beam, towards its southern end, and of



approximately  $\frac{3}{4}$ " depth. It has a solitary bolt thread protruding from its southern end, and probably formed the base of an L-shaped bracket attached to the beam. Similar style and size to feature **5/17**, located on the same beam to the north.

**Assessment of Significance:** The precise function of the pad is unknown, but it appears to be of relatively early, or possibly original date, and is therefore considered to be of MEDIUM significance.

---

Feature Number: **5/17**

Floor / Bay: 5/1

Feature Type: Cut-out /  
compression scar

**Description:** A round-headed, ogee profile cutaway in the soffit of the western tie beam, in the northern part of the bay, and of approximately  $\frac{3}{4}$ " depth. It has a solitary bolt thread protruding from its southern end, and probably formed the base of an L-shaped bracket attached to the beam. Similar style and size to feature **5/16**, located on the same beam to the south.



**Assessment of Significance:** The precise function of the pad is unknown, but it appears to be of relatively early, or possibly original date, and is therefore considered to be of MEDIUM significance.

---

Feature Number: **5/18**

Floor / Bay: 5/2

Feature Type: Timber mark

**Description:** A well-defined Baltic timber mark on the eastern face of the ceiling beam between Bays 1 and 2.



**Assessment of Significance:**

The mark demonstrates that the timber is Baltic softwood, and is therefore considered to be of HIGH significance.

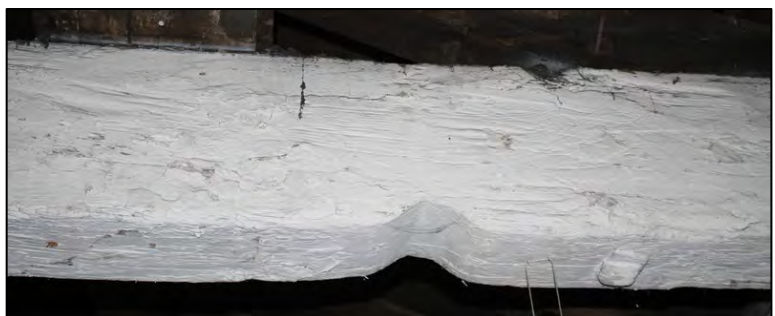
---

Feature Number: **5/19**

Floor / Bay: 5/2

Feature Type: Cut-out /  
compression scar

**Description:** A rounded, cutaway in the soffit of the tie beam between Bays 2 and 3. in the northern part of the bay.





**Assessment of Significance:** The precise function of the cut-out is unknown, but similar features observed in earlier mills would normally be associated with the power transfer system. It appears to be of relatively early, or possibly original date, and is therefore considered to be of HIGH significance.

---

Feature Number: **5/20**

Floor / Bay: 5/2

Feature Type: Cut-out /  
compression scar

**Description:** A rounded, cutaway in the soffit of the tie beam between Bays 2 and 3, in the central part of the bay. More crudely formed than **5/19** to the north, and became redundant following the strengthening of the tie beam with the addition of timber flitch plates **5/21**.



**Assessment of Significance:** The precise function of the cut-out is unknown, but similar features observed in earlier mills would normally be associated with the power transfer system. It appears to be of relatively early, or possibly original date, predating a timber repair to the beam, and is therefore considered to be of HIGH significance.

---

Feature Number: **5/21**

Floor / Bay: 5/2

Feature Type: Flitch plate

**Description:** A pair of rectangular timber flitch plates bolted to both faces of the ceiling beam between Bays 2 and 3. Probably of late-19<sup>th</sup> or early 20<sup>th</sup> century date.



**Assessment of Significance:** These represent a repair to the decayed tie beam end, and are not thought to be early features, and are therefore considered to be of LOW significance.

---

Feature Number: **5/22**

Floor / Bay: 5/2

Feature Type: Bracket

**Description:** An L-section metal bracket (probably steel), bolted to the soffit of the beam between Bays 2 and 3, and the south elevation. Fixed with square-headed bolts and probably of contemporary date to the flitch plates (**5/21**). Probably of late-19<sup>th</sup> or early 20<sup>th</sup> century date.



**Assessment of Significance:** This forms part of a repair to the decayed tie beam end, and is not thought to be an early feature, and is therefore considered to be of LOW significance.

---

Feature Number: **5/23**

Floor / Bay: 5/2

Feature Type: Sprinkler system

**Description:** Extant riser in the sprinkler system, from the 5<sup>th</sup> floor up into the attic within Bay 2.

**Assessment of Significance:**

The sprinkler system represents a well-preserved example of early-twentieth century fire-fighting apparatus found within many mills. Although an important feature of the mill from its installation, which would have been contemporary with the external fire escape, it is unremarkable in its design, and it is therefore considered to be of MEDIUM significance. Its retention would hamper the programme of repair works being undertaken, and it has therefore been recorded as part of a laser scan of the entire floor level prior to its removal.

---



Feature Number: **5/24**

Floor / Bay: 5/3

Feature Type: Bearing box

**Description:** A cast-iron bearing box set within the floor of the 5<sup>th</sup> floor, and infilled by re-used quarry tiles. This represents the bearing box for the upright shaft, which passed vertically between floors within Bay 3, adjacent to the wall of the engine house that was incorporated into the western two bays of the mill at a lower level.



**Assessment of Significance:** Although infilled, the bearing box is an integral part of the original power system within the mill, and is therefore considered to be of HIGH significance.

---



Feature Number: **5/25**

Floor / Bay: 5/3

Feature Type: Bearing box

**Description:** Timber framing for the upright shaft in the ceiling of Bay 3, comprising two large scantling longitudinal beams. And a shorter cross member that would have housed a bearing to stabilise the shaft, and probably form the offtake bevel for the 5<sup>th</sup> floor.



**Assessment of Significance:**

The framing forms an integral part of the original power system within the mill, and is therefore considered to be of HIGH significance.

---

Feature Number: **5/26**

Floor / Bay: 5/3

Feature Type: Cut-out /  
compression scar

**Description:** A rectangular, cutaway in the east face of the beam between Bays 2 and 3, with a larger infilled rectangular cutaway to the south, and a slight rounded cutaway in the soffit of the beam immediately below. Possibly associated with the upright shaft bearing.



**Assessment of Significance:** The precise function of the cut-outs is unknown, but similar features observed in earlier mills would normally be associated with the power transfer system. It appears to be of relatively early, or possibly original date, and is therefore considered to be of HIGH significance.

---

Feature Number: **5/27**

Floor / Bay: 5/3

Feature Type: Cut-out /  
compression scar

**Description:** A rectangular cutaway in the west face of the tie beam between bays 3 and 4, in the northern part of the bay. It is of similar size to that in the opposite face of the beam to the west (5/26), but not aligned, and also has a timber infill. A vertical compression scar in the face of the beam, immediately to the north may form part of the feature.



**Assessment of Significance:** The precise function of the cut-out is unknown, but similar features observed in earlier mills would normally be associated with the power transfer system. It appears to be of relatively early, or possibly original date, and is therefore considered to be of MEDIUM significance.

---

Feature Number: **5/28**

Floor / Bay: 5/3

Feature Type: Fixing bolts

**Description:** Pair of threaded iron bolts projecting from the soffit of the beam between Bays 3 and 4, close to the southern wall. This



arrangement is typical of the attachment for J-shaped line shaft hangers, and the position relative to the long wall of the mill is also typical. However, little evidence for a shaft in this position was observed elsewhere on the 5<sup>th</sup> floor.

**Assessment of Significance:** The bolt pair provides evidence for the position of a possible line shaft within the 5<sup>th</sup> floor, and is therefore considered to be of HIGH significance.

---

Feature Number: **5/29**

Floor / Bay: 5/3

Feature Type: Bracket

**Description:** An L-section angled cast-iron foot bracket for an additional rafter within Bay 3, immediately to the west of the window in the south wall. It is fixed with square-headed bolts and relates to the insertion of a skylight window within the roof above. Probably of late-19<sup>th</sup> or early 20<sup>th</sup> century date.



**Assessment of Significance:** This forms part of an insertion to the southern pitch of the roof, and is not thought to be an early feature, but is considered to be of MEDIUM significance.

---

Feature Number: **5/30**

Floor / Bay: 5/4

Feature Type: Ceiling beam

**Description:** An east/west aligned, narrow timber ceiling beam, placed across the northern part of the bay. The beam is fixed with L-section



cast-iron brackets and square-headed bolts to either face at either end, and is probably associated with a drum scar (**5/33**) to the south



**Assessment of Significance:** The precise function of the beam is unknown, but it appears to be of relatively early, or possibly original date, and is therefore considered to be of MEDIUM significance.

---

Feature Number: **5/31**

Floor / Bay: 5/4

Feature Type: Ceiling beam

**Description:** An east/west aligned narrow I-section steel ceiling beam, placed across the northern part of the bay, to the south of timber beam **5/30** to the immediate north. The beam is fixed with square-headed bolts to either face at both ends, and is possibly associated with a pair of flitch plates on the soffit of the western ceiling beam (**5/32**) to the south. It blocks what appears to be a drum scar (**5/33**) on the east face of the west beam, further suggesting a relatively late date of insertion.



**Assessment of Significance:** The precise function of the beam is unknown, but it appears to be of relatively late date, and is therefore considered to be of LOW significance.

---

Feature Number: **5/32**

Floor / Bay: 5/4

Feature Type: Flitch plate

**Description:** A pair of flat rectangular metal plates bolted to soffit of the ceiling beam between Bays 3 and 4. These have been inserted between the beam and the stirrup to the queen post above, suggesting that there was significant damage to the beam to allow the plates to be manoeuvred into position.



**Assessment of Significance:** These represent a repair to the decayed tie beam end, but may be relatively early features, and are therefore considered to be of MEDIUM significance.

---

Feature Number: **5/33**

Floor / Bay: 5/4

Feature Type: Scar

**Description:** A curving scar within the eastern face of the ceiling beam between Bays 3 and 4. It is unlikely to have been caused by the metal edge of a drum or roller, as it has an elongated run out at its southern side, more suggestive of being caused by a steel rope or possibly leather shafting belt.



**Assessment of Significance:** The scar probably represents evidence of the power transfer system. Possibly that originally provided to the 5<sup>th</sup> floor, and is therefore considered to be of HIGH significance.

---

Feature Number: **5/34**

Floor / Bay: 5/4

Feature Type: Fitch plate

**Description:** A pair of substantial iron plates bolted onto both faces of the ceiling beam between Bays 4 and 5. They have pointed northern ends, suggesting some concept of style as well as pure function, and are secured with several heavily painted square-headed bolts. Both are socketed into the south wall, and appear to be of relatively early date.



and are secured with several heavily painted square-headed bolts. Both are socketed into the south wall, and appear to be of relatively early date.

**Assessment of Significance:** The feature represents an early repair to the decayed tie beam end, and is therefore considered to be of MEDIUM significance.

---

Feature Number: **5/35**

Floor / Bay: 5/4

Feature Type: Cut-out / compression scar

**Description:** A long cutaway in the soffit of the tie beam between Bays 4 and 5, in the southern part of the bay. It has rounded ends, and is typical of a column headplate scar,



possibly suggesting that there may have been an intention to replicate the two column rows seen on the floors below within the 5<sup>th</sup> floor.

**Assessment of Significance:** The feature appears to have been intended to house the headplate of a column, possibly suggesting an alternative original layout of the 5<sup>th</sup> floor, and is therefore considered to be of HIGH significance.

---

Feature Number: **5/36**

Floor / Bay: 5/4

Feature Type: Cut-out / compression scar

**Description:** A cutaway in the soffit of the tie beam between Bays 4 and 5, in the southern part of the bay. It is almost





square section, placed at a slight angle to the beam, and is of unclear function, but is heavily painted, suggesting that it is not a modern feature.

**Assessment of Significance:** The precise function of the cut-out is unknown, but it appears to be of relatively early date, but is considered to be of LOW significance.

---

Feature Number: **5/37**

Floor / Bay: 5/6

Feature Type: Sprinkler system

**Description:** Extant vertical riser in the sprinkler system, from the 4<sup>th</sup> floor into the main array within the 5<sup>th</sup> floor. It comprises a cast-iron water pipe, with an angle joint just below ceiling level translating the pipe adjacent to the west beam, where it feeds into the diminishing pipes throughout the floor.



**Assessment of Significance:** The sprinkler system represents a well-preserved example of early-twentieth century fire-fighting apparatus found within many mills. Although an important feature of the mill from its installation, which would have been contemporary with the external fire escape, it is unremarkable in its design, and it is therefore considered to be of MEDIUM significance. Its retention would hamper the programme of repair works being undertaken, and it has therefore been recorded as part of a laser scan of the entire floor level prior to its removal.

---

Feature Number: **5/38**

Floor / Bay: 5/6

Feature Type: Sprinkler system

**Description:** Extant L-section bracket for sprinkler pipe, attached to the eastern face of ceiling beam between Bays 5 and 6, in the southern part of the bay.

**Assessment of Significance:**

This, and a bracket to the north

(**5/39**) has been retained following the removal of the remainder of the sprinkler system. As the only extant evidence of this important feature, it is considered to be of MEDIUM significance.

---



Feature Number: **5/39**

Floor / Bay: 5/6

Feature Type: Sprinkler system

**Description:** Extant L-section bracket for sprinkler pipe, attached to the eastern face of ceiling beam between Bays 5 and 6, in the northern part of the bay.



**Assessment of Significance:** This, and a bracket to the south (**5/38**) has been retained following the removal of the remainder of the sprinkler system. As the only extant evidence of this important feature, it is considered to be of MEDIUM significance.

---

Feature Number: **5/40**

Floor / Bay: 5/7

Feature Type: Tower

**Description:** Machine-made red brick external hoist tower added to the southern side of Bay 7. No internal access is currently possible

**Assessment of Significance:** Although a relatively late feature, the tower forms good visual evidence for the development of the mill complex through changing technological and economic requirements around the turn of the 20<sup>th</sup> century, and is considered to be of MEDIUM significance.



Feature Number: **5/41**

Floor / Bay: 5/7

Feature Type: Stairs

**Description:** A late timber straight stair from the 5<sup>th</sup> floor to the attic, inserted following the removal of part of the ceiling, almost certainly in the second half of the 20<sup>th</sup> century.

**Assessment of Significance:** The stair has no architectural value, and detracts from the open space of the 5<sup>th</sup> floor, and interpretation of access within the upper levels of the mill. It is considered to be of LOW significance.





Feature Number: **5/42**

Floor / Bay: 5/7

Feature Type: Cut-out /  
compression scar

**Description:** A long shallow compression scar in the soffit of the tie beam between Bays 7 and 8, in the northern part of the bay. It has rounded ends, and is typical of a column headplate scar, possibly suggesting that there may have been an intention to replicate the two column rows seen on the floors below within the 5<sup>th</sup> floor. The scar is covered by the stirrup between the tie beam and queen post of the truss above, demonstrating that the stirrups were not features of the original trusses, but were added subsequently.



**Assessment of Significance:** The feature appears to have been intended to house the headplate of a column, possibly suggesting an alternative original layout of the 5<sup>th</sup> floor, and also demonstrates phasing within the extant truss assembly. It is therefore considered to be of HIGH significance.

---

Feature Number: **5/43**

Floor / Bay: 5/7

Feature Type: Cut-out /  
compression scar

**Description:** A long shallow compression scar in the soffit of the tie beam between Bays 7 and 8, in the southern part of the bay. It has rounded ends, and is typical of a column headplate scar, possibly suggesting that there may have been an intention to replicate the two column rows seen on the floors below within the 5<sup>th</sup> floor. The scar is shallower than that to the north (**5/42**) but also covered by the stirrup between the tie beam and queen post of the truss above, demonstrating that the stirrups were not features of the original trusses, but were added subsequently.



**Assessment of Significance:** The feature appears to have been intended to house the headplate of a column, possibly suggesting an alternative original layout of the 5<sup>th</sup> floor, and also demonstrates phasing within the extant truss assembly. It is therefore considered to be of HIGH significance.

---

Feature Number: **5/44**

Floor / Bay: 5/7

Feature Type: Timber mark

**Description:** A well-defined Baltic timber mark on the soffit of the ceiling beam between Bays 7 and 8, towards its northern end.



**Assessment of Significance:** The mark demonstrates that the timber is Baltic softwood, and is therefore considered to be of HIGH significance.

---

Feature Number: **5/45**

Floor / Bay: 5/8

Feature Type: Cut-out / compression scar

**Description:** A long shallow compression scar in the soffit of the tie beam between Bays 8 and 9, in the northern part of the bay, aligned with those in Bay 7.



It has rounded ends, and is typical of a column headplate scar, possibly suggesting that there may have been an intention to replicate the two column rows seen on the floors below within the 5<sup>th</sup> floor. The scar is shallower than that to the south (**5/46**) but also covered by the stirrup between the tie beam and queen post of the truss above, demonstrating that the stirrups were not features of the original trusses, but were added subsequently.

**Assessment of Significance:** The feature appears to have been intended to house the headplate of a column, possibly suggesting an alternative original layout of the 5<sup>th</sup> floor, and also demonstrates phasing within the extant truss assembly. It is therefore considered to be of HIGH significance.

---

Feature Number: **5/46**

Floor / Bay: 5/8

Feature Type: Cut-out / compression scar

**Description:** A long shallow compression scar in the soffit of the tie beam between Bays 8 and 9, in the southern part of



the bay. It has rounded ends, and is typical of a column headplate scar, possibly suggesting that there may have been an intention to replicate the two column rows seen on the floors below within the 5<sup>th</sup> floor. The scar is deeper than that to the north (**5/45**) and clearly covered by the stirrup between the tie beam and queen post of the truss above, demonstrating that the stirrups were not features of the original trusses, but were added subsequently.



**Assessment of Significance:** The feature appears to have been intended to house the headplate of a column, possibly suggesting an alternative original layout of the 5<sup>th</sup> floor, and also demonstrates phasing within the extant truss assembly. It is therefore considered to be of HIGH significance.

---

Feature Number: **5/47**

Floor / Bay: 5/8

Feature Type: Cut-out /  
compression scar

**Description:** A deep angled cutaway in the west face and soffit of the ceiling beam between Bays 8 and 9, in the southern part of the bay. The feature is deeper on its northern side, and is heavily painted, suggesting that it was relatively early, and possibly related to the power transfer system.



**Assessment of Significance:** The precise function of the cut-out is unknown, but it appears to be of relatively early date, and is considered to be of MEDIUM significance.

---

Feature Number: **5/48**

Floor / Bay: 5/8

Feature Type: Ceiling beam

**Description:** An east/west aligned narrow I-section ceiling beam, placed across the northern part of the bay. The beam is fixed with square-headed bolts to either face at both ends.



**Assessment of Significance:**

The precise function of the beam is unknown, but it appears to be of relatively late date, and is therefore considered to be of LOW significance.

---

Feature Number: **5/49**

Floor / Bay: 5/8

Feature Type: Cut-out /  
compression scar

**Description:** A rectangular compression scar/cut-out in the soffit of the tie beam between Bays 7 and 8, in the southern



part of the bay. This does not have rounded ends, like others seen at this end of the mill, and has a square socket cut into the east face of the beam above.

**Assessment of Significance:** The precise function of the compression mark or possibly associated cut-out on the beam face is unknown, and is of unclear date. It is therefore considered to be of MEDIUM significance.

---

Feature Number: **5/50**

Floor / Bay: 5/9

Feature Type: Tower

**Description:** Machine-made red brick external privy tower added to the southern side of Bay 9. Single skin brick stall divider and mid-20<sup>th</sup> century sanitary ware survive in a poor condition.

**Assessment of Significance:** Although a relatively late feature, the tower forms good visual evidence for the development of the mill complex and changing attitudes towards welfare around the turn of the 20<sup>th</sup> century, and is considered to be of MEDIUM significance.

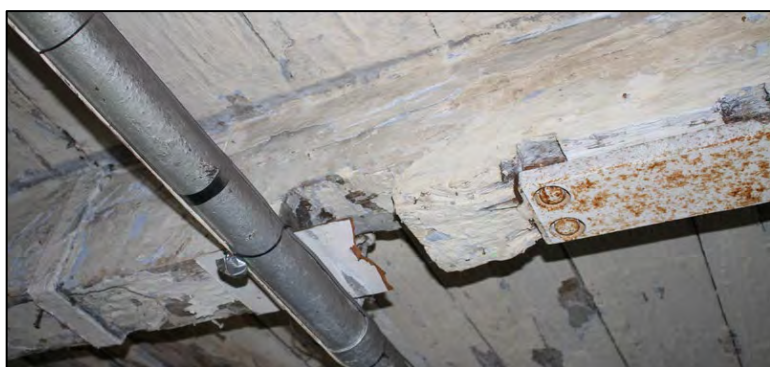


Feature Number: **5/51**

Floor / Bay: 5/9

Feature Type: Cut-out /  
compression scar

**Description:** A deep, rounded cutaway in the soffit of the tie beam between Bays 8 and 9, in the southern part of the bay. Similar in size and style to a further cutaway in the same beam to the north (**5/52**).



**Assessment of Significance:** The precise function of the cut-out is unknown, but similar features observed in earlier mills would normally be associated with the power transfer system. It appears to be of relatively early, or possibly original date, and is therefore considered to be of HIGH significance.

---



Feature Number: **5/52**

Floor / Bay: 5/9

Feature Type: Cut-out /  
compression scar

**Description:** A deep, rounded cutaway in the soffit of the tie beam between Bays 8 and 9, in the northern part of the bay. Similar to that to the south (**5/51**) and overlain by hanger for sprinkler system, showing it to have been redundant by the early-20<sup>th</sup> century.



**Assessment of Significance:** The precise function of the cut-out is unknown, but similar features observed in earlier mills would normally be associated with the power transfer system. It appears to be of relatively early, or possibly original date, and is therefore considered to be of HIGH significance.

---

Feature Number: **5/53**

Floor / Bay: 5/8

Feature Type: Timber mark

**Description:** A Baltic timber mark on the soffit of the ceiling beam between Bays 8 and 9, to the south of the central column.



**Assessment of Significance:** The mark demonstrates that the timber is Baltic softwood, and is therefore considered to be of HIGH significance.

---

Feature Number: **5/54**

Floor / Bay: 5/9

Feature Type: Timber mark

**Description:** A Baltic timber mark on the east face of the ceiling beam between Bays 8 and 9, immediately above central column.



**Assessment of Significance:**

The mark demonstrates that the timber is Baltic softwood, and is therefore considered to be of HIGH significance.

---

Feature Number: **5/55**

Floor / Bay: 5/9

Feature Type: Timber mark

**Description:** A Baltic timber mark on the east face of the ceiling beam between Bays 8 and 9, immediately below the southern principal rafter of the truss above (**6/01**).



**Assessment of Significance:**

The mark demonstrates that the timber is Baltic softwood, and is therefore considered to be of HIGH significance.

---

Feature Number: **5/56**

Floor / Bay: 5/9

Feature Type: Timber mark

**Description:** A well-defined Baltic timber mark on the soffit of the ceiling beam between Bays 9 and 10, to the south of the central column.



**Assessment of Significance:**

The mark demonstrates that the timber is Baltic softwood, and is therefore considered to be of HIGH significance.

---

Feature Number: **5/57**

Floor / Bay: 5/9

Feature Type: Cut-out /  
compression scar

**Description:** A long shallow compression scar in the soffit of the tie beam between Bays 9 and 10, in the northern part of the bay. It has rounded ends, and is typical of a column headplate scar, possibly suggesting that there may have been an intention to replicate the two column rows seen on the floors below within the 5<sup>th</sup> floor. The scar is clearly covered by the stirrup between the tie beam and queen post of the truss above, demonstrating that the stirrups were not features of the original trusses, but were added subsequently.



**Assessment of Significance:** The feature appears to have been intended to house the headplate of a column, possibly suggesting an alternative original layout of the 5<sup>th</sup> floor, and



also demonstrates phasing within the extant truss assembly. It is therefore considered to be of HIGH significance.

---

Feature Number: **5/58**

Floor / Bay: 5/10

Feature Type: Cut-out /  
compression scar

**Description:** A long shallow compression scar in the soffit of the tie beam between Bays 10 and 11, in the northern part of the bay. It has rounded ends, and is typical of a column headplate scar, possibly suggesting that there may have been an intention to replicate the two column rows seen on the floors below within the 5<sup>th</sup> floor. The scar is clearly covered by the stirrup between the tie beam and queen post of the truss above, demonstrating that the stirrups were not features of the original trusses, but were added subsequently.



**Assessment of Significance:** The feature appears to have been intended to house the headplate of a column, possibly suggesting an alternative original layout of the 5<sup>th</sup> floor, and also demonstrates phasing within the extant truss assembly. It is therefore considered to be of HIGH significance.

---

Feature Number: **5/59**

Floor / Bay: 5/10

Feature Type: Cut-out /  
compression scar

**Description:** An approximately square cut-out in the east face of the tie beam between Bays 9 and 10, at the northern end of the bay. It has a rounded head, possibly relating to the shape of a bolt that it housed, but is of unclear function.



**Assessment of Significance:** The precise function of the cut-out is unknown, but it appears to be of relatively early date, and is considered to be of MEDIUM significance.

---

Feature Number: **5/60**

Floor / Bay: 5/10

Feature Type: Ceiling beam

**Description:** An east/west aligned steel I-section ceiling beam, placed across the southern part of the bay, and carried on a cast-iron L-section bracket on the inner face of both tie beams. The beam



probably replaced an earlier timber example. Appears to be associated with a bearing box above the window in the south wall (**5/62**) and with three similar beams to the north (**5/61**).

**Assessment of Significance:** The beam appears to be associated with a bearing box in the south wall, and possibly represents the remodelling of an earlier beam in this position, , and is therefore considered to be of MEDIUM significance.

---

Feature Number: **5/61**

Floor / Bay: 5/10

Feature Type: Ceiling beam

**Description:** Three east/west aligned steel I-section ceiling beams, placed across the southern part of the bay. All appear contemporary, and probably later than beam **5/60** to the south, although the southern of the three beams, is



similarly carried on a cast-iron L-section bracket on the inner face of both tie beams. It is unclear whether the beams are associated with a bearing box above the window in the south wall (**5/62**) and with beam **5/60** to the south.

**Assessment of Significance:** The beams are possibly associated with a bearing box in the south wall, but represent late remodelling, and are therefore considered to be of LOW significance.

---

Feature Number: **5/62**

Floor / Bay: 5/10

Feature Type: Bearing box

**Description:** Bearing box suspended from an I-section steel beam above the window in the south wall of Bay 10. It is open on its lower side, where the transom of the window has



also been cut to accommodate the feature, which probably housed a rail for an external hoist



that appears to have been inserted into the window aperture, and may have been replaced by the later tower constructed to the south of Bay 7.

**Assessment of Significance:** The bearing box appears to be associated with hoist inserted into the southern window of Bay 10. This possibly predated the hoist tower adjacent to Bay 7, and as this is the only evidence for there having been an external hoist in this position, it is therefore considered to be of HIGH significance.

---

Feature Number: **5/63**

Floor / Bay: 5/10

Feature Type: Cut-out /  
compression scar

**Description:** A cutaway in the soffit of the tie beam between Bays 10 and 11, in the southern part of the bay. It is almost square section, placed at a slight angle to the beam, and is of unclear function, but is heavily painted, suggesting that it is not a modern feature.



**Assessment of Significance:** The precise function of the cut-out is unknown, but it appears to be of relatively early date, and is considered to be of MEDIUM significance.

---

Feature Number: **5/64**

Floor / Bay: 5/10

Feature Type: Timber mark

**Description:** A Baltic timber mark on the soffit of the ceiling beam between Bays 10 and 11, in the southern part of the bay.



**Assessment of Significance:** The mark demonstrates that the timber is Baltic softwood, and is therefore considered to be of HIGH significance.

---

Feature Number: **5/65**

Floor / Bay: 5/11

Feature Type: Partition

**Description:** A late timber stud partition wall forming a small room in the north-east corner of the 5<sup>th</sup> floor. Almost certainly of late-20<sup>th</sup> century date, and of a very temporary nature

**Assessment of Significance:**

The low-quality construction wall detracted from the open space of the 5<sup>th</sup> floor, and is therefore considered to be of LOW significance, but was recorded prior to its removal.



---

Feature Number: **5/66**

Floor / Bay: 5/11

Feature Type: Flitch plates

**Description:** A pair of rectangular channel-section steel flitch plates bolted to both faces of the ceiling beam between Bays 11 and 12. The beams are jointed above the column head, comprising two members to each side of the beam. Several rolling stamps bearing the name of the Frodingham Iron and Steel Co were observed, demonstrating the beams to be of 20<sup>th</sup> century date, and almost certainly associated with strengthening works to the eastern end of the roof structure undertaken during the installation of a new stair tower (**5/70**).



**Assessment of Significance:** These represent strengthening beams added to the tie beam of the eastern truss during the insertion of the early-20<sup>th</sup> century stair tower, and are therefore considered to be of LOW significance.

---

Feature Number: **5/67**

Floor / Bay: 5/11

Feature Type: Cut-out /  
compression scar

**Description:** A deep, rectangular cutaway in the soffit of the tie beam between Bays 11 and 12, in the southern part of the bay. The aperture is blocked to either side by late flitch plates (**5/66**), and potentially relates to the earlier power transmission system within the 5<sup>th</sup> floor.



**Assessment of Significance:** The precise function of the cut-out is unknown, but similar features observed in earlier mills would normally be associated with the power transfer system. It appears to be of relatively early, or possibly original date, and is therefore considered to be of HIGH significance.

---



Feature Number: **5/68**

Floor / Bay: 5/11

Feature Type: Flitch plate

**Description:** A single narrow flat iron flitch plate bolted to soffit of the ceiling beam between Bays 11 and 12 immediately to the south of the column. It is placed above the stirrup of the southern queen post, either predating it, or signifying significant damage.



**Assessment of Significance:** This appears to represent an early strengthening of the eastern tie beam, and is therefore considered to be of MEDIUM significance.

---

Feature Number: **5/69**

Floor / Bay: 5/11

Feature Type: Mounting bracket

**Description:** A collar placed around the head of the eastern original collar to carry the channel-section flitch plates to the eastern beam (**5/66**). It rests on the vertical casting for the end bearing mounting of the original column.



**Assessment of Significance:** This represents 20<sup>th</sup> century strengthening of the eastern tie beam, but detracts from the form of the highly unusual eastern column, possibly causing stress to the vertical casting for the end bearing of the original line shaft. It is therefore considered to be of LOW significance.

---

Feature Number: **5/70**

Floor / Bay: 5/12

Feature Type: Tower

**Description:** Machine-made red brick external stair tower added to the eastern end of the south wall of Islington Mill. Added in the early-20<sup>th</sup> century, possibly replacing a stair tower that encased the original chimney, to the south of the power plant in Bay 3.



**Assessment of Significance:** Although a relatively late feature, the tower forms good visual evidence for the development of the mill complex around the turn of the 20<sup>th</sup> century, and is considered to be of MEDIUM significance.

---

Feature Number: **5/71**

Floor / Bay: 5/12

Feature Type: Corbel

**Description:** Six tiered brick corbels of four courses height

placed from the southern end of the east gable wall to the position of the northern eaves partition in the attic above. Together they support a small ceiling beam (**5/72**) that carried the eastern end of the ceiling planks of Bay 12.



**Assessment of Significance:** Although only marginally decorative, the corbels provide good evidence of the original construction of the mill, and in particular the method of carrying the large planks forming the attic floor from the gable wall to the eastern truss. They are therefore considered to be of HIGH significance.

---

Feature Number: **5/72**

Floor / Bay: 5/12

Feature Type: Ceiling beam

**Description:** A three-piece timber rail placed on tiered corbels **5/71** to carry the eastern end of the ceiling planks of Bay 12.

The northern end of the beam is chamfered to the wall face, providing slight architectural detailing, but the members are joined with a simple scarf joint, and a butt joint, the latter possibly representing the attachment of a replaced member.



**Assessment of Significance:** Although only marginally decorative, the beam provides good evidence of the original construction of the mill, and in particular the method of carrying the large planks forming the attic floor from the gable wall to the eastern truss. It is therefore considered to be of HIGH significance.

---

Feature Number: **5/73**

Floor / Bay: 5/12

Feature Type: Timber mark

**Description:** A Baltic timber mark on the soffit of a rafter in the lower part of the north pitch of Bay 12. This provides good evidence that many of the rafters are original



**Assessment of Significance:** The mark demonstrates that the timber is early, and of Baltic softwood, and is considered to be of MEDIUM significance.

---



## *Gazetteer of Heritage Features: Attic*

---

Feature Number: **6/01**

Floor / Bay: 6/All

Feature Type: Trusses

**Description:** Each bay division is spanned by a timber queen post truss, the tie beam of which formed the ceiling beams of the 5<sup>th</sup> floor below (**5/03**). Both queen posts are of relatively large scantling rectangular section, tenoned into the tie beam below floor level, with the joint apparently having been augmented subsequently with an iron stirrup. The jowled outer part of the foot of each queen post supports a slender straight brace to the principal rafter, itself tenoned into the jowled head of the queen post, that clasps the upper of three purlins to each pitch. Straining beams complete the truss, placed level with the head of each principal rafter.



large scantling rectangular section, tenoned into the tie beam below floor level, with the joint apparently having been augmented subsequently with an iron stirrup. The jowled outer part of the foot of each queen post supports a slender straight brace to the principal rafter, itself tenoned into the jowled head of the queen post, that clasps the upper of three purlins to each pitch. Straining beams complete the truss, placed level with the head of each principal rafter.

**Assessment of Significance:** The trusses are original to the construction of the mill, and thus an integral element of the structure and are of HIGH significance.

Several of the timbers are in poor condition, and their repair has been included within the current project. These will be undertaken sympathetically, retaining as much original fabric as possible, whilst attempting not to obscure any significant detail. Cleaning of the timbers will be undertaken carefully to avoid damage to features identified on the beams. Three of the straining beams will be removed to facilitate improved access and usage of the roof space. Their loss has been mitigated by a 3D laser scan of the attic accompanied by photographs and descriptions.

---

Feature Number: **6/02**

Floor / Bay: 6/All

Feature Type: Side purlins

**Description:** Each pitch has three rectangular-section side purlins. The upper purling is carried by the jowled head of the queen posts of each truss (**6/01**), whilst the two lower purlins are trenched into the principal rafters. All are butt jointed above each truss.



**Assessment of Significance:** The purlins form part of the original roof structure of the mill, and are of HIGH significance.

Several of the timbers are in poor condition, and their repair has been included within the current project. These will be undertaken sympathetically, retaining as much original fabric as possible, whilst attempting not to obscure any significant detail. Cleaning of the timbers will be undertaken carefully to avoid damage to features identified on the beams.

---

Feature Number: **6/03**

Floor / Bay: 6/All

Feature Type: Ridge purlins

**Description:** Somewhat unusually for a queen post truss roof, the structure has a ridge purlin, comprising an edge-set timber board, typical of roof structures from the second half of the 19<sup>th</sup> century and more commonly associated with king post trusses. They appear to be butt-ended along the length of the roof, and form part of a renewal of the roof, that was probably associated with the addition of towers to the southern elevation of the mill in the early 20<sup>th</sup> century.



**Assessment of Significance:** The ridge boards form part of a renewal of the roof structure, probably in the early 20<sup>th</sup> century, and are of LOW significance.

---

Feature Number: **6/04**

Floor / Bay: 6/All

Feature Type: Rafters

**Description:** The majority of the rafters appear to form part of the renewal of the roof associated with the ridge purlins (**6/03**). They are circular sawn rectangular section, and of typical late 19<sup>th</sup> century or later style. A Baltic timber mark observed on the foot of one rafter (**5/71**) suggests that all are of imported European softwood. Similar-section timbers were also added as collars to most rafter pairs from Bay 3 eastwards, for the insertion of a suspended ceiling, almost certainly undertaken at the same time.



**Assessment of Significance:** The majority of the rafters form part of a renewal of the roof structure, probably in the early 20<sup>th</sup> century, and are of LOW significance. Earlier rafters have been highlighted as separate entries within this gazetteer

---

Feature Number: **6/05**

Floor / Bay: 6/1 & 12

Feature Type: Gable walls

**Description:** Either end of the mill has a vertical gable wall that forms a continuation of the hand-made brick end walls of the floor below (**5/01**). Both are heavily painted, obscuring detail, but are dominated by central, large round-headed





windows (6/06).

**Assessment of Significance:** The walls form an integral element of the structure and are of HIGH significance. Interventions should ideally be kept to a minimum to preserve this important original fabric.

---

Feature Number: **6/06**

Floor / Bay: 6/1 & 12

Feature Type: Windows

**Description:** Both gable walls (6/05) house large central round headed windows. Both have replacement window frames of differing late age, but the apertures remain unaltered with the round-headed arch formed by a single course of edge-set brick, and a sloping sill of angled brick.



**Assessment of Significance:** The window apertures form an integral element of the structure and are of HIGH significance. Interventions should ideally be kept to a minimum to preserve this important original fabric. The frames and glazing are of little heritage merit.

---

Feature Number: **6/07**

Floor / Bay: 6/All

Feature Type: Window

**Description:** Skylight windows in the both pitches of the roof, in alternating bays, and alternating per pitch, to provide a skylight to each bay apart from that eastern bay, where the stair tower was inserted in 1928. They were placed centrally within each bay, spanning the whole space between the upper



and central purlins and are typically of timber-framed construction, with narrow surround and glazing bar between the two vertical panes of later reinforced mesh glass.

That in Bay 3, within the north pitch, is a three-light window, possibly representing the more original form, prior to later reglazing, whilst those in Bays 1, 7, and 11 had more recent Velux-type double-glazed, single light replacements.

**Assessment of Significance:** The window apertures are all of relatively late date, and largely retain even later glazing, and are therefore considered to be of LOW significance.

---

Feature Number: **6/08**

Floor / Bay: 6/All

Feature Type: Floor

**Description:** The attic retains the only timber floor within Islington Mill, with all those below being of brick arched construction. Within the main body of the mill, the floor planks are set Longitudinally, and are typically 10 $\frac{1}{4}$ " wide and 2 $\frac{3}{4}$ " thick, with 2" wide,  $\frac{1}{4}$ " thick metal tongue jointing them together. Similar boards are placed perpendicular within the eaves, although many have perished due to water ingress.



**Assessment of Significance:** The timber floor forms an integral element of the structure and is of HIGH significance. However, certain areas are in a poor state of repair, and the remodelling required to make the attic a viable space for future use requires the central void within the floor to be enlarged. The floor has been recorded to mitigate its loss, and where possible, original boards will be used to replace existing unsympathetic repairs. Further interventions should ideally be kept to a minimum to preserve this important original fabric.

---

Feature Number: **6/09**

Floor / Bay: 6/All

Feature Type: Eaves partition:  
lath and plaster

**Description:** The longitudinally, planked floor (**6/08**) was bounded by partition walls to both eaves. That on the northern side retained original lath and plaster walls, with damage revealing this to be of horse-hair and lime-based fabric. The southern eaves were partitioned by planks (**6/09**) and are described below, and probably represent a later remodelling.



**Assessment of Significance:** The plastered eaves partitions appear to represent an original element of the structure, and is therefore considered to be of HIGH significance. However, given the poor preservation of the roof timbers, and planking to the eaves floor, both eaves partitions must be removed. Their loss has been mitigated by 3D laser scanning and photographic recording.

---



Feature Number: **6/10**

Floor / Bay: 6/All

Feature Type: Eaves partition:  
timber plank

**Description:** The southern eaves of the attic were partitioned at a similar location to those on the northern side of the roof space (**6/09**) but comprised horizontal timber planks of various sizes. This probably represents a later remodelling of the roof space either enclosing previously open eaves, or replacing damaged lath and plaster. However, it would appear to be a relatively early intervention given the similarity with the white and Dolly Blue paint layers also observed on the original roof trusses (**6/01**) and purlins (**6/02**). The eastern two bays of the northern eaves also retained planked rather than plaster eaves partitions.



**Assessment of Significance:** The timber planked southern eaves partitions appear to represent an unusual remodelling of the eaves partition, and are considered to be of MEDIUM significance. However, given the poor preservation of the roof timbers, and planking to the eaves floor, both eaves partitions must be removed. Their loss has been mitigated by 3D laser scanning and photographic recording.

---

Feature Number: **6/11**

Floor / Bay: 6/All

Feature Type: Compression  
mark

**Description:** The majority of the original roof trusses (**6/01**) have compression marks on the eastern face of the straining beam. This denotes the position of the mounting brackets for pillow bearings



that were placed on top of each straining beam, carrying a line shaft down the length of the attic, in both directions from the upright shaft in Bay 3. That between Bays 1 and 2 also has a rounded cut out (**6/12**), possibly suggesting that the original intention had been to socket the bearing into the straining beam, rather than on a raised pillow bracket.

**Assessment of Significance:** The compression marks provide evidence for the original power transfer system within Islington Mill, and demonstrate that power was used in the upper floor. They are therefore considered to be of HIGH significance and damage should be avoided when cleaning the trusses.

---

Feature Number: **6/12**

Floor / Bay: 6/1 & 2

Feature Type: Cut out /  
compression mark

**Description:** Rounded cut out in the straining beam of the truss between Bays 1 and 2. This possibly suggests that the original intention had been to socket the bearing into the straining beam, rather than on a raised pillow bracket. The beam has a compression mark below on its eastern face, with green staining from a brass bearing bracket, demonstrating that a similar bracket was installed, similar to the trusses to the east of the upright shaft. The cutaway is blocked by a king post inserted above the straining beam (**6/13**).



**Assessment of Significance:** The combined cut out and compression mark provide evidence for the original power transfer system, and a possible modification to the original design within the upper floor of Islington Mill. It is, therefore considered to be of HIGH significance and damage should be avoided when cleaning the trusses.

---

Feature Number: **6/13**

Floor / Bay: 6/1 & 2

Feature Type: Truss

**Description:** A slender king post and angled braces was added to the western face of the truss between Bays 1 and 2 above the straining beam. The king post clasps the slender ridge board (**6/03**), and is probably of contemporary date. It blocks the position of the line shaft bearing (**6/11** and **6/12**) at the western end of the mill, demonstrating that line shafting was no longer required, at least in the western end of the attic, by this date.



**Assessment of Significance:** The additional truss members appear to relate to the remodelling of the roof in the early-20<sup>th</sup> century, and may denote its western extent, given the survival of plaster undersealing to the west (**6/14**). It is therefore considered to be of MEDIUM significance.

---



Feature Number: **6/14**

Floor / Bay: 6/1 & 2

Feature Type: Ceiling

**Description:** The western two bays of the attic retain a lath and plaster ceiling, undersealing the rafters. This comprises similar horse-hair and lime-based fabric to the plastered eaves partition (**6/08**), laid over close-set laths, and is likely to represent the original form of the ceiling throughout the attic. It is bounded on its eastern side by additional support for the ridge board (**6/13**), possibly suggesting that the roof below the plaster retains its original layout.



**Assessment of Significance:** The small remnant of plastered ceiling appears to represent the original form of the attic, also possibly suggesting that less significant remodelling of the roof was undertaken to the western end of the roof in the early-20<sup>th</sup> century. It is therefore considered to be of HIGH significance. However, given the poor preservation of the roof timbers, and the structural failure of the roof as a whole, the ceiling has to be removed during the current phase of repair works. Its loss has been mitigated by 3D laser scanning and photographic recording.

---

Feature Number: **6/15**

Floor / Bay: 6/1

Feature Type: Hoist

**Description:** A hoist between the 5<sup>th</sup> and 6<sup>th</sup> floors, placed in the southern part of the western bay. It survives to the full height of the bay, and comprises horizontal tongue-and-grooved planking to a squared timber stud frame. An opening in the west side may have had a door at some point, and affords access into the hoist tower, which retains timber framing carrying a large pulley wheel, and two smaller pulley wheels for a rope on the western side. The aperture between floors (**5/14**) also has an *in-situ* cover.



**Assessment of Significance:** The feature represents an insertion, probably in the late-19<sup>th</sup> or early 20<sup>th</sup>-century, although the housing may be for an earlier opening between the two floors. The hoist mechanism survives intact, increasing its rarity, and it is therefore considered to be of HIGH significance.

---

Feature Number: **6/16**

Floor / Bay: 6/1

Feature Type: Bolts

**Description:** A pair of threaded iron bolts project from the soffit of the upper purlin of the south pitch of the roof in Bay 1. They are placed within a rectangular compression mark, and clearly represent the mounting for a bracket.



Whilst the precise purpose of the bracket is unclear, it is likely to relate to either an end bearing for the line shafting at the western end of the attic, or to the adjacent hoist (**6/15**), possibly representing the remains of an earlier hoist in this position that was powered by the line shafting.

**Assessment of Significance:** The bolts relate to a bracket or bearing that appears early, and probably original to the use of the attic within the mill, and it is therefore considered to be of HIGH significance.

---

Feature Number: **6/17**

Floor / Bay: 6/2

Feature Type: Rafters

**Description:** A pair of larger scantling rafters on the southern pitch of Bay 2, compared with the majority of late rafters (**6/04**). These were placed adjacent to the truss between Bays 2 and 3, and were placed on their flat section of approximately 4", rather than being edge-set, like the replacement 2-3" rafters.



**Assessment of Significance:** The rafters appear to have been part of the original roof structure, but it is unclear whether they survive in their original position, or were simply re-used during the refurbishment of the roof. However, they are considered to be of HIGH significance, and should be retained during the roof repairs if practical. However, should this prove unfeasible, their loss has been mitigated by 3D laser scanning and photographic recording.

---



Feature Number: **6/18**

Floor / Bay: 6/2

Feature Type: Sprinkler system

**Description:** the vertical riser for the supply of the sprinkler system to the attic was placed within Bay 2, adjacent to the south queen post on the eastern side of the bay, to minimise impact on movement throughout the attic. It is of smaller section than on the floors below, and has a T-piece



at its head feeding diminishing-section pipes throughout the attic. That providing the feed to the east blocks the line shaft position, demonstrating that this had become redundant by the time that the sprinkler system was installed.

**Assessment of Significance:** The sprinkler system was extant within the roof space at the time of the initial inspection of the mill, and represents a fine example of early-20<sup>th</sup> century fire-fighting improvements within a mill setting. Although an important feature of the mill from its installation, which would have been contemporary with the external fire escape, it is unremarkable in its design, and it is therefore considered to be of MEDIUM significance. Its retention would hamper the programme of repair works being undertaken, and it has therefore been recorded as part of a 3D laser scan of the entire floor level prior to its removal.

---

Feature Number: **6/19**

Floor / Bay: 6/3

Feature Type: Partition

**Description:** The eastern face of the truss between Bays 2 and 3 has a partial partition wall formed of vertically-set timber planks. This survived from both queen posts to the eaves partition walls (**6/09** and **6/10**), and in part, above the straining beam. The boarding to the southern queen post stopped



slightly short of its inner edge. Where two iron pintels survive, clearly representing the hanging for door hinges. This would have had to have either been only a partial door across the opening between the queen posts, or a folding door, in order to allow it to pass the upright shaft (**6/20**), that as placed in the western part of Bay 3. The fabric and condition of the partition suggests that it represents an original feature within the roof space, rather than post-dating the use of the upright shaft, although it may represent an early addition following the apparent repositioning of the upright shaft (**6/21**).

**Assessment of Significance:** The partition represents an early, probably original feature, providing detail of the early use of the attic space, and is considered to be of HIGH significance, and should be retained during the roof.

---

Feature Number: **6/20**

Floor / Bay: 6/3

Feature Type: Bearing box

**Description:** Metal plate covering for the upright shaft from the 5<sup>th</sup> floor (**5/25**). This would have been added following the replacement of the shaft, which appears to have happened in the mid-19<sup>th</sup> century.



**Assessment of Significance:** Whilst the metal plate signifies the redundancy of the original power transmission system, it is probably of relatively early date, and is therefore considered to be of MEDIUM significance. It's retention is not critical to the future visual interpretation of the attic space, so long as the aperture it covers is not concealed without evidence for its position, for example, by a continuous floor covering.

---

Feature Number: **6/21**

Floor / Bay: 6/3

Feature Type: Bearing

**Description:** Top bracket framing for the upright shaft from the 5<sup>th</sup> floor (**5/25**). It is of similar form to that within the ceiling of the floor below, comprising two large scantling longitudinal beams, and a shorter cross member that would have housed the top bearing to stabilise the shaft,



and house the offtake bevel for the line shaft along the centre of the attic. The area above the framing has a lath and plaster capping, which probably represents a survival of the reduced ceiling level added into the attic to the east, during the refurbishment of the roof in the early-20<sup>th</sup> century. This houses pipes relating to the sprinkler system, which may have been added at the same time, but the position of the latter clearly demonstrates that the upright shaft was redundant by the time of its installation.

**Assessment of Significance:** The framing forms an integral part of the original power system within the mill, and is therefore considered to be of HIGH significance.

---



Feature Number: **6/22**

Floor / Bay: 6/3

Feature Type: Bearing box

**Description:** Timber-framed aperture with planked infill for a possible secondary upright shaft from the 5<sup>th</sup> floor. This would have been added following the relocation of the 5<sup>th</sup>



floor line shaft to the north, which appears to have happened in the mid-19<sup>th</sup> century. It is possible that the original upright shaft was retained within the modified power transfer system, and it is likely that an upright shaft bearing for translating power to the attic would have had a cast-iron surround by this date.

**Assessment of Significance:** Whilst the feature possibly relates to the upgrading of the power transmission system in the mid-19<sup>th</sup> century, its form suggests that this is unlikely, and is therefore considered to be of MEDIUM significance.

---

Feature Number: **6/23**

Floor / Bay: 6/3

Feature Type: Hoist

**Description:** The southern side of Bay 3 has several additional timbers added to the roof structure. These comprise an additional principal rafter, placed at the mid-point of the bay, that rises to a longitudinal beam, placed immediately below the upper purlin, and of similar scantling. IT was slung



on an iron bar that lapped over the straining beam of the adjacent trusses, and has a Baltic timber mark (**6/24**) on its northern face, demonstrating it to be of relatively early date.

To the west of the additional principal rafter a box frame was placed beneath the common rafters, which are overlain by horizontal timber sarking planks. The timber-planked eaves partition below (**6/10**) had a vertical butt joint beneath the additional principal rafter, with that in the western part of the bay having been replaced with much narrower boards.

It appears likely that the feature represents the framing for, and subsequent infilling of a hoist, with further evidence being provided by a raising and thickening of the external south parapet wall in this position.

**Assessment of Significance:** The feature appears to represent the position of an external hoist access. The fabric of the large timbers that form its surround suggest that it may be original to the construction of the mill, or likely an early addition. The framing within appears to relate to its blocking, which was either left in situ during the refurbishment of the mill roof in

the early 20<sup>th</sup> century, or more probably, represents a later infilling. Given its potentially early date, it is therefore considered to be of HIGH significance.

---

Feature Number: **6/24**

Floor / Bay: 6/3

Feature Type: Timber mark

**Description:** Baltic timber mark on the north face of the additional purlin in the south pitch of Bay 3, near its eastern end.

**Assessment of Significance:** The mark demonstrates that the timber is of Baltic softwood, and of relatively early date, and is therefore considered to be of HIGH significance.

---



Feature Number: **6/25**

Floor / Bay: 6/4

Feature Type: Timber mark

**Description:** Assembly marks on the western faces of both queen posts between Bays 4 and 5. The inscription comprises crudely scraped numerals VIII, signifying the 8<sup>th</sup> truss, and demonstrating that they would have originally been numbered from the eastern end of the building.



**Assessment of Significance:** The mark represents important detail about the construction of the roof of the mill, and is therefore considered to be of HIGH significance.

---

Feature Number: **6/26**

Floor / Bay: 6/5

Feature Type: Timber mark

**Description:** Baltic timber mark on the east face of the straining beam of the truss between Bays 4 and 5, near its southern end.





**Assessment of Significance:** The mark demonstrates that the timber is of Baltic softwood, and of relatively early date, and is therefore considered to be of HIGH significance.

---

Feature Number: **6/27**

Floor / Bay: 6/6

Feature Type: Timber mark

**Description:** Baltic timber mark on the south face of the central purlin in the north pitch of Bay 6, near its western end.

**Assessment of Significance:**

The mark demonstrates that the timber is of Baltic softwood, and of relatively early date, and is therefore considered to be of HIGH significance.

---



Feature Number: **6/28**

Floor / Bay: 6/6

Feature Type: Timber mark

**Description:** Assembly mark on the western face of the southern queen post between Bays 6 and 7, and in an adjacent position on the straining beam. The inscription comprises crudely scraped numerals VI, signifying the 6<sup>th</sup> truss, and demonstrating that they would have originally been numbered from the eastern end of the building.



**Assessment of Significance:** The mark represents important detail about the construction of the roof of the mill, and is therefore considered to be of HIGH significance.

---

Feature Number: **6/29**

Floor / Bay: 6/7

Feature Type: Rafter

**Description:** A larger scantling rafter within the southern pitch of Bay 7, compared with the majority of late rafters (**6/04**). This was placed adjacent to the truss between Bays 7 and 8, and projects from a late lath and plaster ceiling (**6/30**) that



survives within the eastern part of the bay between the upper and central purlins, unlike the later rafters, that are sealed by the plaster ceiling.

**Assessment of Significance:** The rafter appears to have been part of the original roof structure, and it is likely to survive in its original position, given the different treatment of the rafters associated with the refurbishment of the roof in the early 20<sup>th</sup> century. It is therefore considered to be of HIGH significance, and should be retained during the roof repairs if practical. However, should this prove unfeasible, their loss has been mitigated by 3D laser scanning and photographic recording.

---

Feature Number: **6/30**

Floor / Bay: 6/7 & 8

Feature Type: Ceiling

**Description:** The central section of the south pitch of the roof within Bay 7 retains part of a plaster ceiling, above late inserted stairs (5/41), and extending into Bay 8. This differs markedly from the horse-hair and lime-based plaster observed within Bays 1 and 2 (6/14), and to the northern eaves (6/08) being of a harder grey mortar, with charcoal rather than hair inclusions.



**Assessment of Significance:** The small remnant of plastered ceiling appears to represent a partial or full reinstatement of the ceiling of the attic undertaken following the refurbishment of the roof in the early-20<sup>th</sup> century. It is therefore considered to be of LOW significance.

---

Feature Number: **6/31**

Floor / Bay: 6/7 & 8

Feature Type: Fitch plate

**Description:** A pair of substantial timber plates bolted onto both faces of the principal rafter of the southern pitch of the truss between Bays 7 and 8. They are of similar scantling to the principal rafter and are jointed with square-headed bolts and square washers.



**Assessment of Significance:**

The feature represents a repair to the roof truss, but is of unclear date, possibly relating to the refurbishment of the roof in the early 1920s, and is therefore considered to be of MEDIUM significance.

---



Feature Number: **6/32**

Floor / Bay: 6/8

Feature Type: Timber mark

**Description:** Baltic timber mark on the south face of the central purlin in the north pitch of Bay 8, near its centre.

**Assessment of Significance:**

The mark demonstrates that the timber is of Baltic softwood, and of relatively early date, and is therefore considered to be of HIGH significance.

---



Feature Number: **6/33**

Floor / Bay: 6/8

Feature Type: Timber mark

**Description:** Baltic timber mark on the east face of the northern principal rafter between Bays 7 and 8, placed approximately centrally between the upper and central purlins.

**Assessment of Significance:**

The mark demonstrates that the timber is of Baltic softwood, and of relatively early date, and is therefore considered to be of HIGH significance.

---



Feature Number: **6/34**

Floor / Bay: 6/8

Feature Type: Timber mark

**Description:** Baltic timber mark on the east face of the southern principal rafter between bays 7 and 8, located approximately centrally between the queen post and the timber fitch plate (**6/31**).

**Assessment of Significance:**

The mark demonstrates that the timber is of Baltic softwood, and of relatively early date, and is therefore considered to be of HIGH significance.

---



Feature Number: **6/35**

Floor / Bay: 6/8

Feature Type: Rafter

**Description:** A larger scantling rafter within the southern pitch of Bay 8, compared with the majority of late rafters (**6/04**). This was placed adjacent to the truss between Bays 7 and 8, and formed the eastern boundary of the late lath and plaster ceiling (**6/30**). It is of similar scantling to those to the west (**6/17** & **6/29**) and was overlain by a rafter of the refurbished roof (**6/04**).



**Assessment of Significance:** The rafter appears to have been part of the original roof structure, and it is likely to survive in its original position, given the different treatment of the rafters associated with the refurbishment of the roof in the early 20<sup>th</sup> century. It is therefore considered to be of HIGH significance, and should be retained during the roof repairs if practical. However, should this prove unfeasible, their loss has been mitigated by 3D laser scanning and photographic recording.

---

Feature Number: **6/36**

Floor / Bay: 6/8

Feature Type: Decoration

**Description:** A small decorative motif on the central purlin of the southern pitch, placed approximately centrally, and comprising what appears to be a cross within a circle. It was constructed using hobnails, with squared pyramidal heads. Such features are rare, and may represent a



superstition similar that to placing shoes beneath floors to ward off evil spirits. There is also the possibility that it marks a commemoration to the people that died in the collapse of the mill during the latter stages of its construction in 1823.

**Assessment of Significance:** The survival of such features within industrial premises is very rare, and it is therefore considered to be of HIGH significance, and should be protected during the roof repairs.

---



Feature Number: **6/37**

Floor / Bay: 6/8

Feature Type: Timber mark

**Description:** Assembly marks on the western face of the northern queen post between Bays 8 and 9. The inscription comprises crudely chiselled numerals IIII, signifying the 4<sup>th</sup> truss, and demonstrating that they would have originally been numbered from the eastern end of the building. The possible



remains of a single 'I' is visible on the adjacent straining beam, suggesting that a full corresponding assembly mark survives beneath significant layers of paint

**Assessment of Significance:** The mark represents important detail about the construction of the roof of the mill, and is therefore considered to be of HIGH significance.

---

Feature Number: **6/38**

Floor / Bay: 6/8

Feature Type: Timber mark

**Description:** Assembly marks on the western face of the southern brace between Bays 8 and 9, close to its joint into the jowled foot of the queen post.



The inscription comprises the

faint, and crudely scratched numerals IIII, matching that on the head of the queen post (**6/37**).

**Assessment of Significance:** The mark represents important detail about the construction of the roof of the mill, and is therefore considered to be of HIGH significance.

---

Feature Number: **6/39**

Floor / Bay: 6/8 & 9

Feature Type: Truss

**Description:** Additional slender horizontal member added to the southern brace of the truss between Bays 8 and 9, lap-jointed into a vertical member of similar scantling that braces between the floor and the principal rafter against the timber boarded eaves partition (**6/10**). Possibly added for a



partition similar to that observed between Bays 2 and 3 (**6/19**).

**Assessment of Significance:** The timbers represent a modification to the truss, and are of unknown date. There is little evidence for their possible use, so they are therefore considered to be of LOW significance.

---

Feature Number: **6/40**

Floor / Bay: 6/9

Feature Type: Timber mark

**Description:** Assembly marks on the western face of the northern queen post between Bays 9 and 10. The inscription comprises crudely chiselled numerals III, signifying the 3<sup>rd</sup> truss, and demonstrating that they would have originally been numbered from the eastern end of the building. No evidence for a corresponding assembly mark was visible on the adjacent straining beam.



**Assessment of Significance:** The mark represents important detail about the construction of the roof of the mill, and is therefore considered to be of HIGH significance.

---

Feature Number: **6/41**

Floor / Bay: 6/8

Feature Type: Timber mark

**Description:** Baltic timber mark on the north face of the upper purlin in the south pitch of Bay 9, near its centre.

**Assessment of Significance:** The mark demonstrates that the timber is of Baltic softwood, and of relatively early date, and is therefore considered to be of HIGH significance.





Feature Number: **6/42**

Floor / Bay: 6/9

Feature Type: Rafters

**Description:** A pair of larger scantling rafters within the southern pitch of Bay 9, compared with the majority of late rafters (**6/04**). These were placed centrally within the bay, and comprised only short lengths spanning the central and upper purlins. They are of similar scantling to those to the west (**6/17**, **6/29** & **6/35**) but were almost certainly not in their original position, and had probably also been reduced in length.



**Assessment of Significance:** The rafter appears to have been part of the original roof structure, but appear unlikely to survive in their original position, most probably having been reused during the refurbishment of the roof in the early 20<sup>th</sup> century. They are therefore considered to be of MEDIUM significance, and their loss has been mitigated by 3D laser scanning and photographic recording.

---

Feature Number: **6/43**

Floor / Bay: 6/10

Feature Type: Partition

**Description:** A late timber stud partition wall partitioning the eastern two bays from the remainder of the attic. The area to the east was accessible only by the 20<sup>th</sup> century stair tower, whilst that to the east was only accessible from the late central timber stair (**5/41**) following the insertion of this partition. It may be of comparable date to the similar partition on the floor below, **5/63**.



**Assessment of Significance:** The low-quality construction wall detracted from the open space of the 5<sup>th</sup> floor, and is therefore considered to be of LOW significance, but was recorded prior to its removal.

---

Feature Number: **6/44**

Floor / Bay: 6/11

Feature Type: Timber mark

**Description:** Baltic timber mark on the south face of the upper purlin in the north pitch of Bay 11, adjacent to the eastern truss.



**Assessment of Significance:** The mark demonstrates that the timber is of Baltic softwood, and of relatively early date, and is therefore considered to be of HIGH significance.

---

Feature Number: **6/45**

Floor / Bay: 6/11 & 12

Feature Type: Truss

**Description:** Additional vertical posts clamping the southern queen post of the truss between Bays 11 and 12. This was almost certainly inserted during the addition of a hip to the eastern bay of the roof, associated with the addition of a stair tower on the southern side of this bay in 1928. Similar scantling bracing was added to support the eastern end of the lower purlin, that of the end bay being removed to afford access from the new stair tower.

**Assessment of Significance:**

The timbers represent a modification to the truss, associated with the addition of the stair tower in 1928. They show good detail of the alterations to the main roof associated with this remodelling of the eastern bay, and are therefore considered to be of MEDIUM significance.

---



Feature Number: **6/46**

Floor / Bay: 6/12

Feature Type: Roof

**Description:** Addition of a hip to the southern side eastern bay of the roof, associated with the addition of a stair tower in 1928. It is of similar scantling to the refurbished roof to the main body of the mill, but is less weathered, retaining a brighter colour, suggesting that it is a later remodelling, and that the refurbishment of the roof was taken significantly prior to 1928. It comprises common rafter rising to a ridge board, with a single slender hip purlin added at its angle with the south pitch of the main roof





**Assessment of Significance:** The roof is clearly associated with the addition of the stair tower in 1928. However, it appears to demonstrate phasing between the two roofs, and is therefore considered to be of MEDIUM significance.

---

Feature Number: **6/47**

Floor / Bay: 6/12

Feature Type: Partition

**Description:** angled wall of vertical timber planks masking the foot of the eastern truss, on its eastern side within Bay 12. This was added during the insertion of the stair tower in 1928 to mask the lower part of the southern principal rafter and the eaves of Bay 11.



**Assessment of Significance:**

The partition represents part of the modifications associated with the addition of the stair tower in 1928. However, they form a non-structural detail of the alterations to the main roof associated with this remodelling of the eastern bay, and are therefore considered to be of LOW significance, and will be removed following 3D laser scanning.

---

Feature Number: **6/48**

Floor / Bay: 6/12

Feature Type: Timber mark

**Description:** Baltic timber mark on the east face of the southern principal rafter of the eastern truss, located above the additional bracing to the lower purlin (**6/45**).



**Assessment of Significance:**

The mark demonstrates that the timber is of Baltic softwood, and of relatively early date, and is therefore considered to be of HIGH significance.

---

Feature Number: **6/49**

Floor / Bay: 6/12

Feature Type: Timber mark

**Description:** Baltic timber mark on the east face of the brace to the northern queen post, at its foot.



**Assessment of Significance:** The mark demonstrates that the timber is of Baltic softwood, and of relatively early date, and is therefore considered to be of HIGH significance.

---

Feature Number: **6/50**

Floor / Bay: 6/12

Feature Type: Timber mark

**Description:** Baltic timber mark on the east face of the brace to the southern queen post, at its foot.

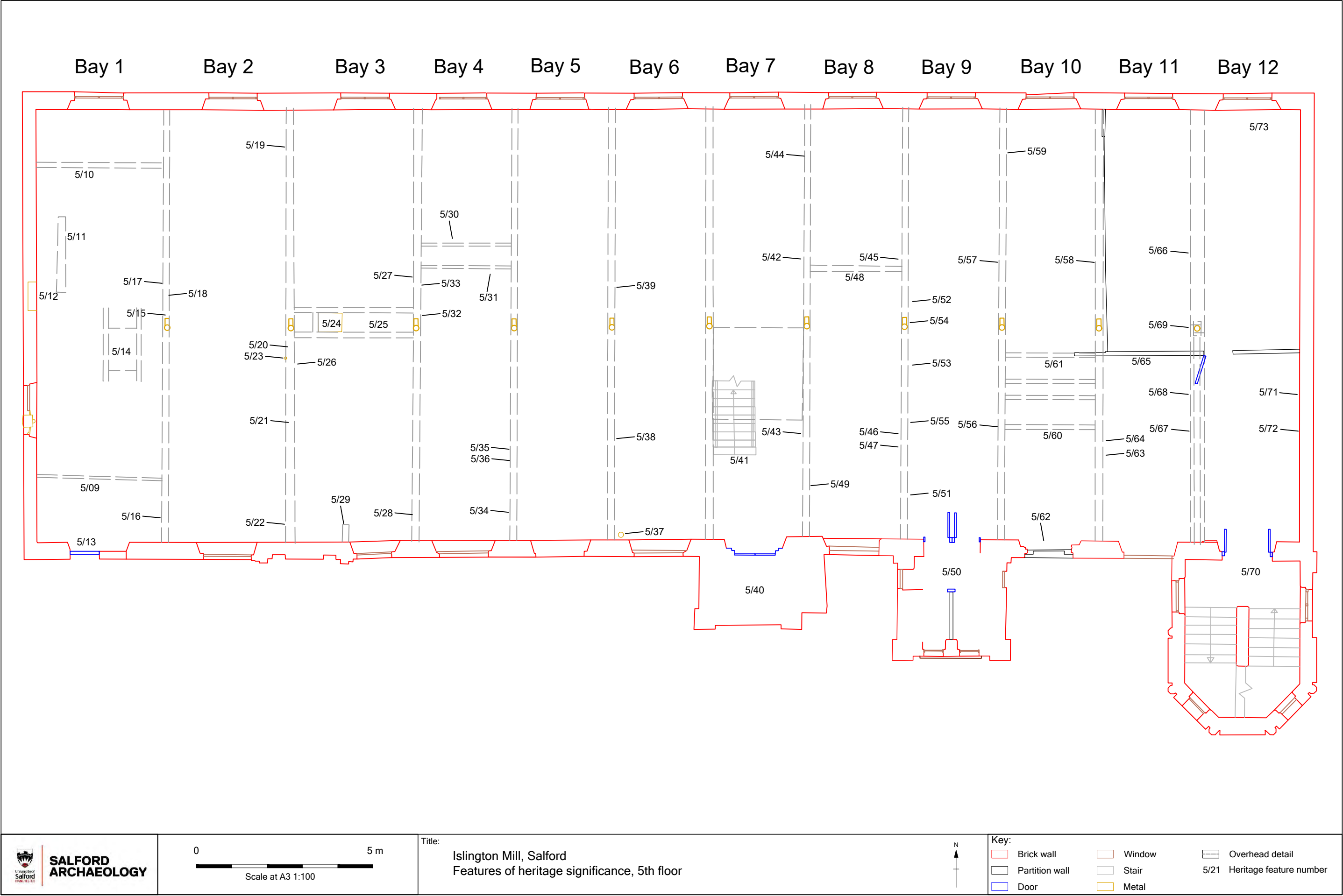
**Assessment of Significance:**

The mark demonstrates that the timber is of Baltic softwood, and of relatively early date, and is therefore considered to be of HIGH significance.

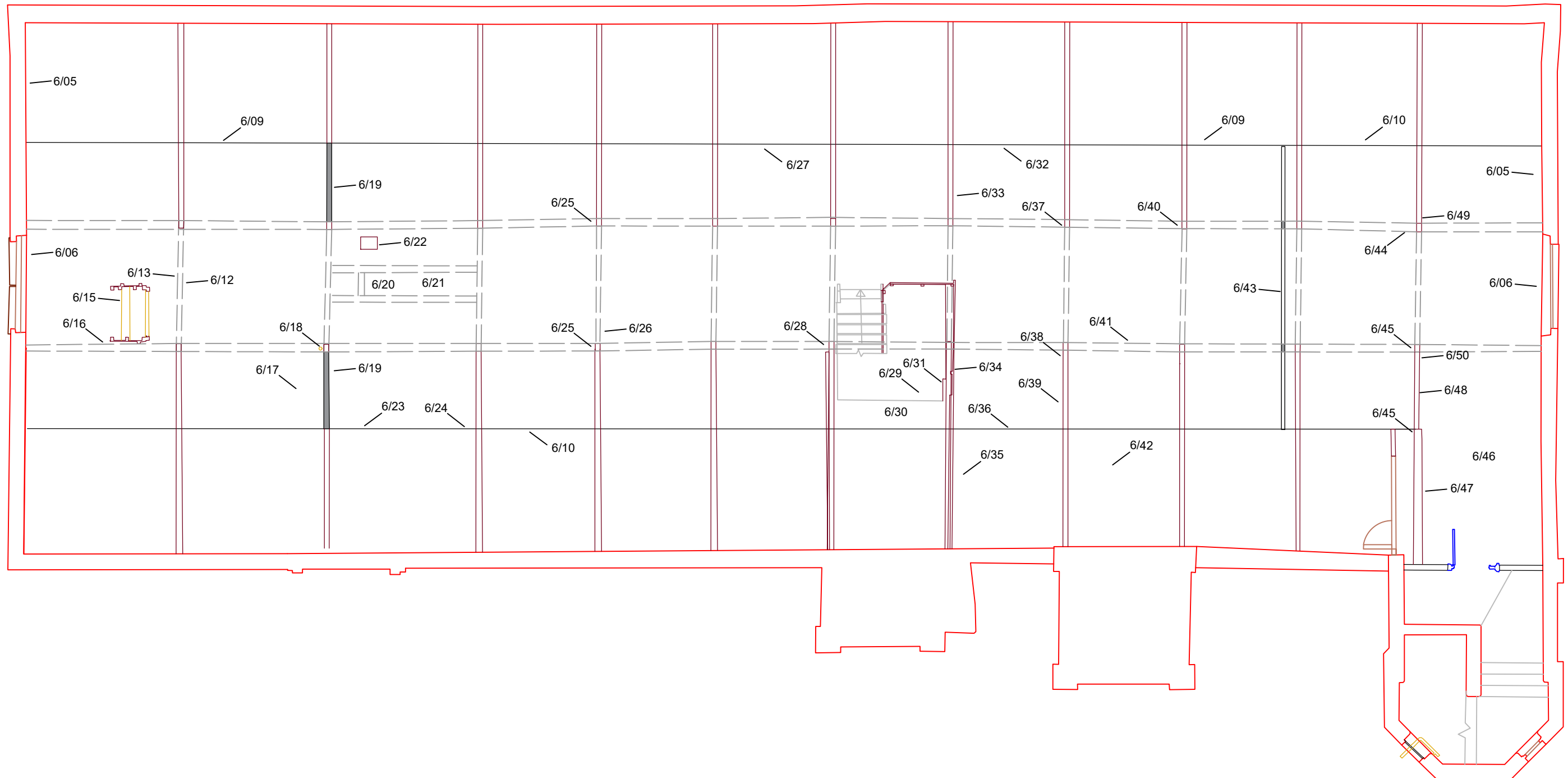
---







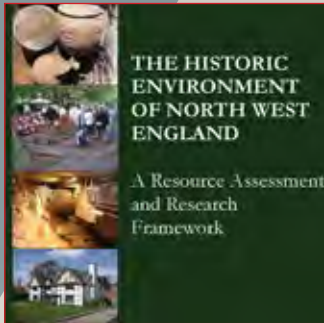
Bay 1 Bay 2 Bay 3 Bay 4 Bay 5 Bay 6 Bay 7 Bay 8 Bay 9 Bay 10 Bay 11 Bay 12







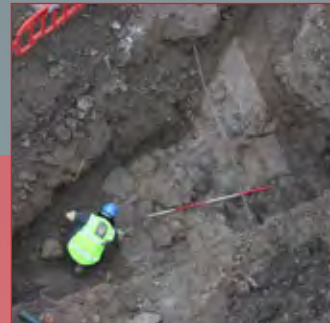
## CONSULTANCY



## DESK-BASED ASSESSMENTS



## WATCHING BRIEF & EVALUATION



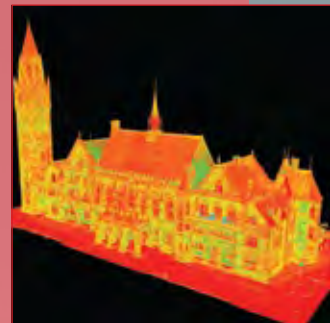
## EXCAVATION



## BUILDING SURVEY



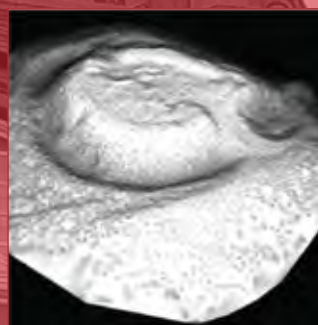
## 3D LASER SCANNING



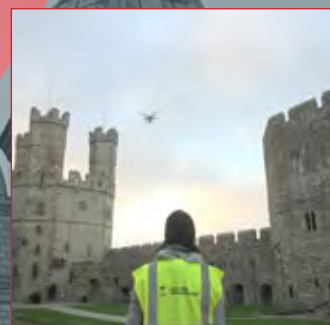
## COMMUNITY INVOLVEMENT



## LANDSCAPE SURVEYS



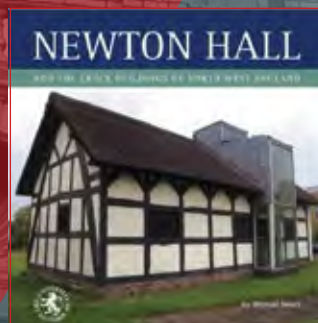
## DRONE SURVEYS



## WORKSHOPS & VOCATIONAL TRAINING



## RESEARCH PUBLICATIONS



## SEMINARS, DAYSCHOOLS CPD EVENTS

